



# ICONIC RESIDENCY

*Harmony. Happiness. High-life homes.*



*Iconic Residency...  
Peace of mind. A piece of paradise.*

Iconic Residency is a 22-story rera registered residential skyscraper with each floor having 4 residential units of various configurations - 1 BHK, 2 BHK & 2.5 BHK. All apartments are Vastu-compliant and designed to maximise carpet space. Three high-speed elevators along with two car lifts are provided for convenience of residents.



**Grand Entrance Lobby**

Artist's Impression



Artist's Impression



Artist's impression

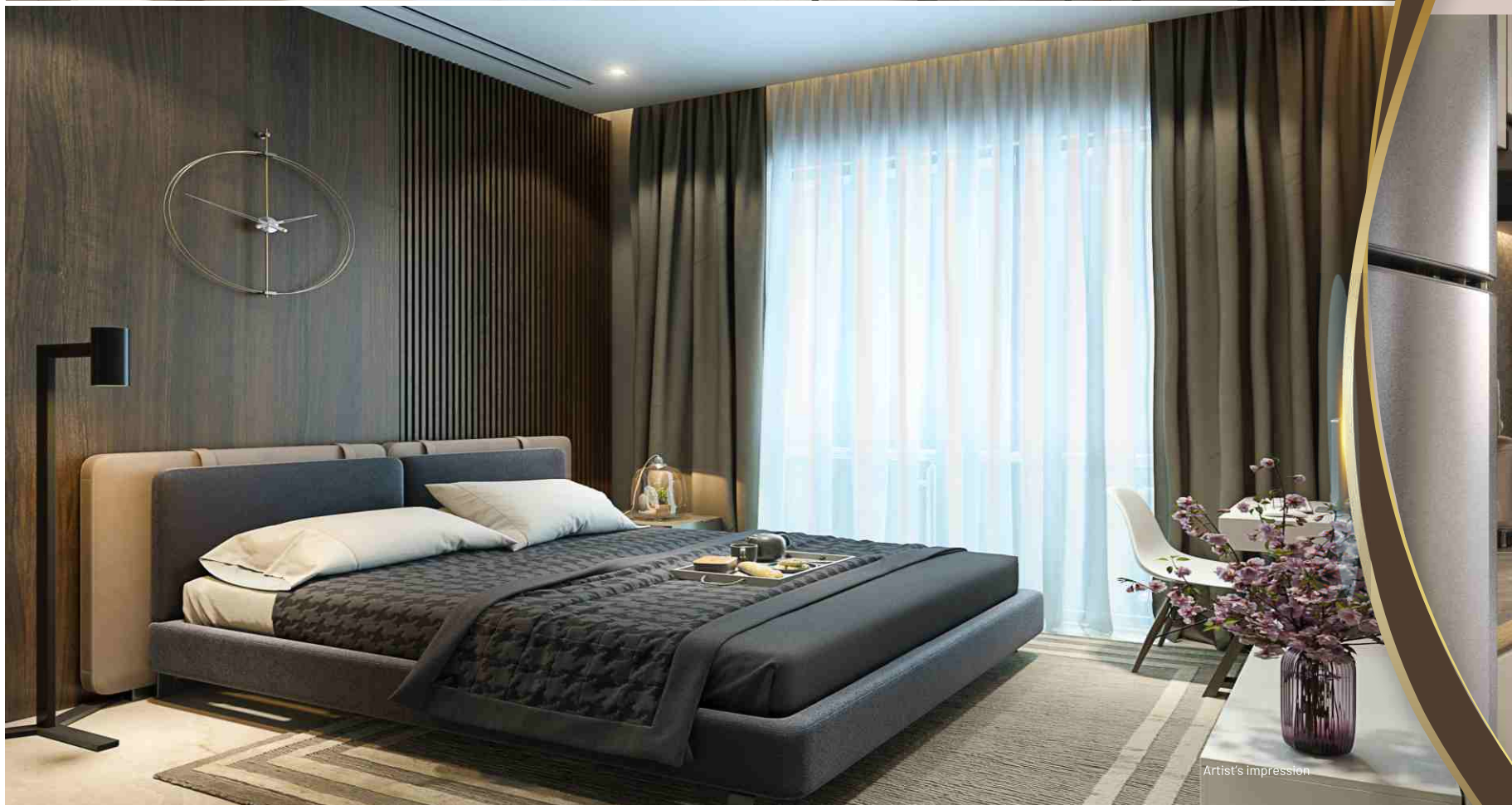


### *Where your dreams come home....*

HM Realty recognises homeowners need of a luxurious, healthy, and comfortable living. Every home at Iconic residency is carefully built and detailed to fit your lifestyle. Our expert hands have developed beautiful buildings with traditional values of integrity, discipline, and high-quality material.

#### **Internal Amenities :**

- Premium flooring
- French windows
- Granite kitchen platform
- Branded CP fittings & Sanitary Wares
- Anti skid ceramic bathroom tiles
- Concealed copper wiring
- Branded switches
- Intercom system with video door phone
- 24x7 CCTV surveillance
- Modern lifts of reputed make



Artist's impression



Artist's impression



**Gymnasium**



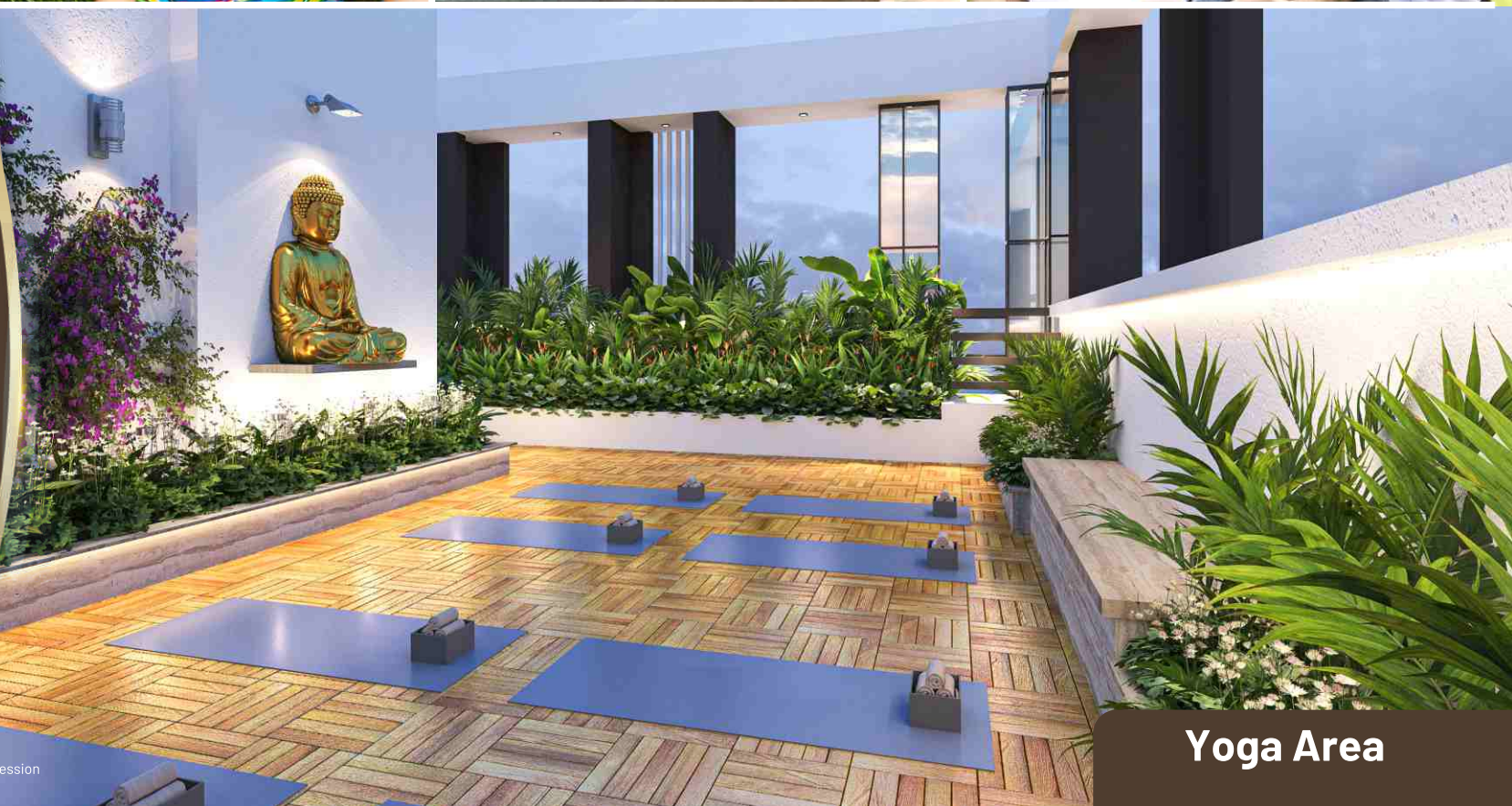
**Gazebo Seating**

*Building Homes... Enriching Lives.*

Iconic tower in itself is a complete tower with fulfilling amenities. Provided on the terrace are amenities for every age group - such as a Gazebo, Kids play area, Yoga corner and Sensory & Reflexology path. A well-equipped air conditioned Fitness centre is provided on the first floor.



**Kids Play Area**



**Yoga Area**

Artist's impression

Artist's impression



*Typical Floor Plan*



*8th Floor  
Refuge Plan*

*15th Floor  
Refuge Plan*



1 BHK - 444 SQ.FT. Rera Carpet Area



1 BHK - 475 SQ.FT. Rera Carpet Area



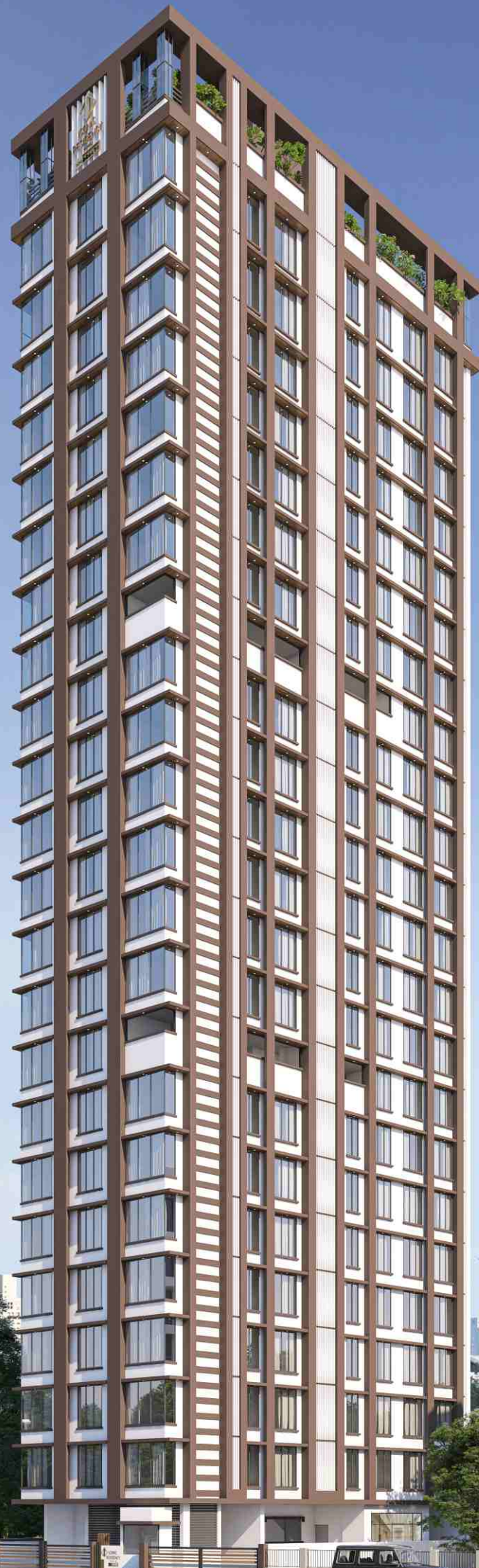
2 BHK - 468 SQ.FT. Rera Carpet Area



2.5 BHK - 771 SQ.FT. Rera Carpet Area



*3D Flat Views*



Artist's Impression



## ICONIC RESIDENCY

Located in the heart of Rajendra Nagar, Borivali's lively residential area, Iconic Residency is conveniently close to Borivali Railway Station and the Western Express Highway. It is linked to S.V. Road via the East-West Flyover. Iconic Residency shines bright in its faultlessly designed infrastructure. It is located in close proximity to a variety of services and conveniences including Banks, Schools, Shopping Malls, Movie Theatres, and Health Care Facilities.



Western Express Highway  
700 Mtr.



Borivali Railway Station  
500 Mtr.



Proposed Metro Network  
1 Km.



Borivali National Park  
1.5 Kms.



Magathane bus depot  
800 Mtr.



# ICONIC RESIDENCY

A PROJECT BY



## ARCHITECT

M/s. Space Moulders

## RCC CONSULTANT

Mr. Gireesh M. Rajadhyaksha

## LEGAL ADVISOR

P. Vas & Co.



**Rajendra Nagar Raj Kiran CHS Ltd., Building No. 01, Rajendra Nagar, Borivali (E), Mumbai - 400066**



**+91 98200 67436**



**hmrealty10@gmail.com**



**MahaRera Registration No: P51800034669,**

The project is registered as "Rajendra Nagar Raj Kiran CHS Ltd"

Details available on website <http://maharera.mahaonline.gov.in/> under registered projects.

**HM REALTY CORPORATE ADDRESS :**

**12, Pitalwala C.H.S.Ltd, Tilak Road, Santacruz (W), Mumbai - 400054**

\*T&C apply. The name Iconic residency is used for promotional purpose only. This brochure is not a legal document and does not constitute an offer or contract of any nature whatsoever between the Promoter/Developer and the recipient. All rendered visuals, images, plans and maps are artist's conceptions meant for illustration purpose only, unless otherwise mentioned. Location map, distance are approximate and not to scale, it's only for better understanding. All colors, furniture, fittings shown are aesthetic representation purpose only and are not part of the flat offer for sale, it only describes a conceptual plan to convey the intent and purpose of the Promoter/ Developer. The details mentioned in the brochure are tentative and subject to approval. The Promoter/ Developer reserves the right of modify and vary the detail mentioned herein at its sole discretion. The Promoter/ developer does not warrant or assume any legal liability for the accuracy, completeness or usefulness of any information disclosed. For more details call our representative.